

InVersa Board-to-Board Connector



3.10mm pitch InVersa Board-to-Board Connectors in hermaphrodite design offer space-savings, friction locking and secure mating ideal for LED lighting applications

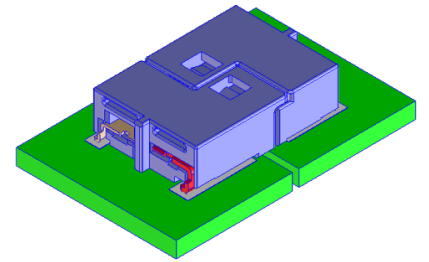
Features and Advantages

Friction locking

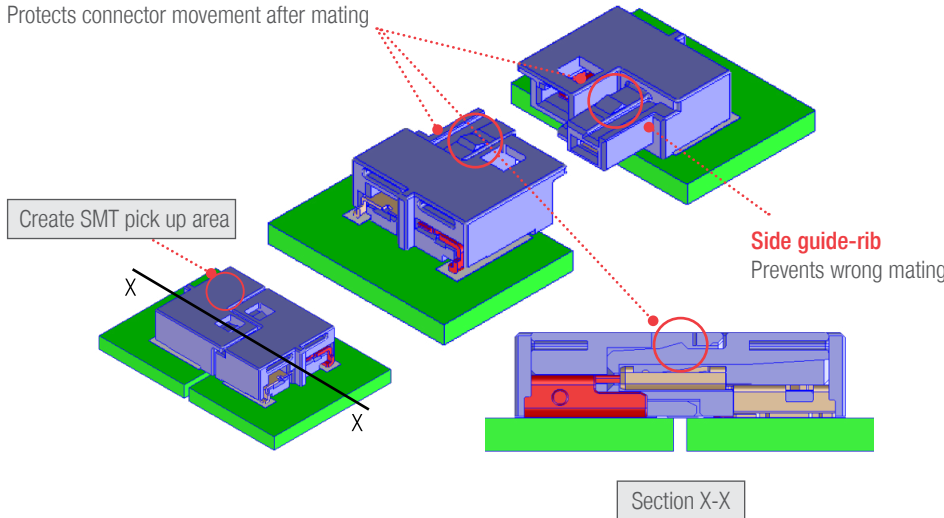
Audible click provides mating assurance
Protects connector movement after mating

Wide operating temperature range

Offers design flexibility

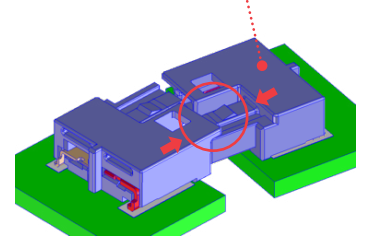


3.10mm-Pitch InVersa Board-to-Board Connectors

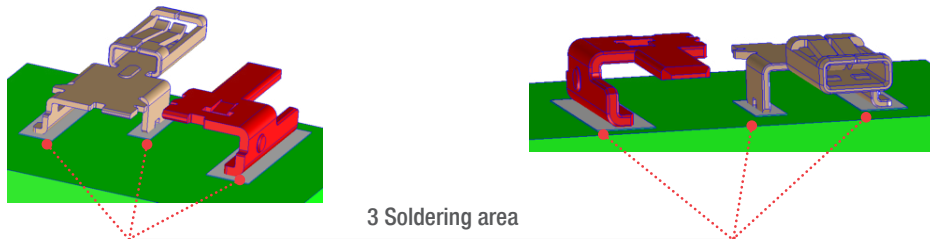


Twisted mating of LED bars

Prevents terminal deformation

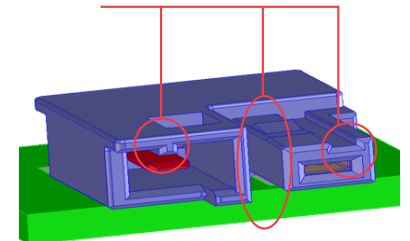


Integral soldering area for both male and female terminals



Partition and guide rib

Allows smooth mating



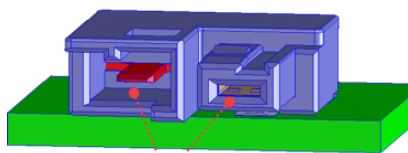
Improved PCB retention force

Protected contact area

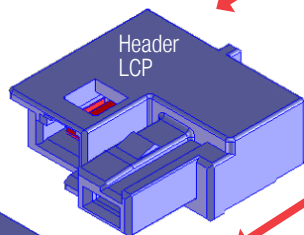
Reinforces physical and electrical assurance by 4 point contact

Larger solder area

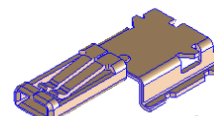
[Reinforces soldering strength on mating area]



Contact Terminal is positioned inside Housing

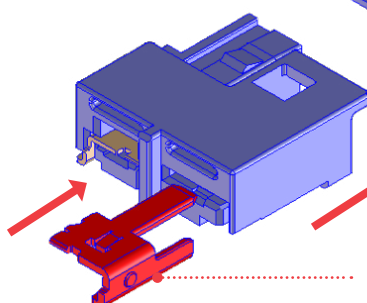


Before mating



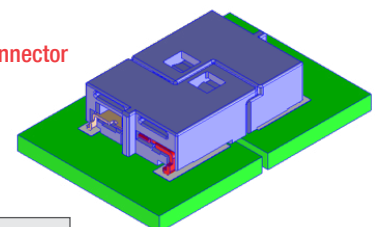
Contact female terminal
Copper alloy
Pre tin-plating

Contact and fitting nail



Contact Male Terminal
Copper Alloy
Post Tin-Plating

Hermaphrodite type connector



After mating

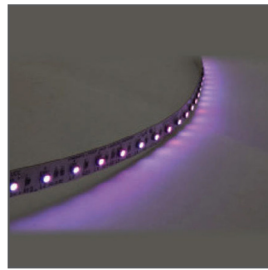
InVersa Board-to-Board Connector



Applications

Electrical and Industrial

- Linear lighting module
- Signboard



Linear Lighting Module



Signboard

Specifications

REFERENCE INFORMATION

Packaging: Tape and Reel
Designed In: Millimeters
RoHS: Yes
Halogen Free: Low-halogen
UL Rating: UL94V-0

ELECTRICAL

Voltage (max.): 300V
Current (max.): 1.5A
Contact Resistance (max.): 20milliohm
Temperature Rise (max.): 30°C

MECHANICAL

Pitch: 3.10mm
Mated Height: 2.60mm
Width: 6.50mm
Length: 7.20mm
Circuit Size: 2 Circuit

PHYSICAL

Housing:
Receptacle: LCP Natural color only, UL 94V-0
Plug: LCP Natural color only, UL 94V-0
Locking Type: Friction Lock
Connector Type: Hermaphrodite
Resin Material: LCP (Liquid Crystal Polymer)
Plating: Tin (Sn)
Terminal: Phosphor Bronze
Operating Temperature: -25 to +130°C

Ordering Information

Part Number	Product Description	Product Height
202431	InVersa Board-to-Board Connector	2.60mm

Note: Molex reserves the right to delay or cancel production of the depicted product without additional notice. Please contact your Molex customer service representative for product availability.

www.molex.com

Molex is a registered trademark of Molex, LLC in the United States of America and may be registered in other countries; all other trademarks listed herein belong to their respective owners.