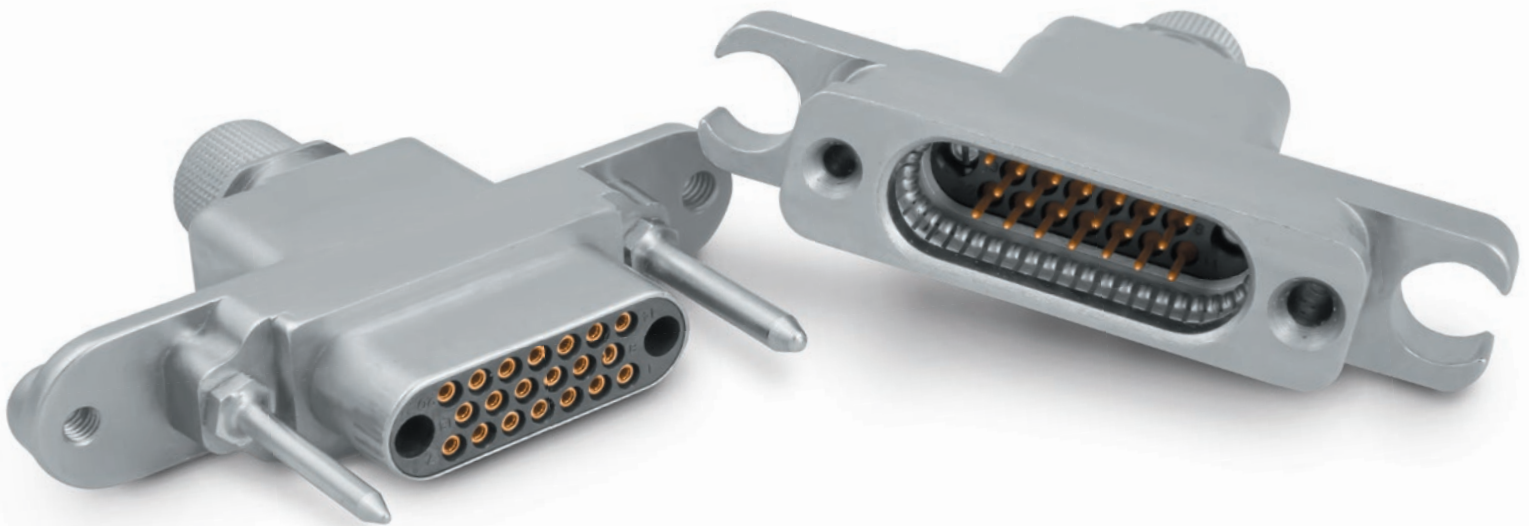


PZC SERIES

High Reliability, Ruggedised Floating Connectors



FEATURES

- ▶ **Utilises field-proven Hypertac® contact technology**
 - ▶ Wire basket design with 360° of contact
 - ▶ 50% lower contact resistance than conventional contacts
 - ▶ Excellent signal integrity
 - ▶ High contact safety from extraction (1 mm)
 - ▶ More than 500 mating cycles
- ▶ **Rugged, float-mounting design**
 - ▶ Available in 20 and 41 ways
 - ▶ RoHS compliant, nickel-plated shell
 - ▶ Polarised guides
 - ▶ Knurl design and band clamping system allows for adaptation to different shieldings and cable clamps

BENEFITS

- ▶ **High reliability**
 - ▶ Immunity to wear generated from shock, vibration and fretting corrosion
 - ▶ Deters downtime and system failures
- ▶ **Superior durability in harsh environments**
 - ▶ Designed specifically for severe environment applications where signal integrity is paramount
 - ▶ Ideal for commercial aviation and defence applications
- ▶ **Optimised mating accuracy**
 - ▶ Ensures correct integration in blind mate or restricted access applications
 - ▶ Accepts misalignment up to 2 mm
 - ▶ User-friendly solution for easy and simple connection/disconnection

TECHNICAL CHARACTERISTICS

MECHANICAL & ENVIRONMENTAL

Mating Cycle Life	> 500
Mating Force	> 0.2 N to < 3.3 N
Contact Retention	> 45 N
Temperature Range	-65° C to 125° C
Dry Heat	1,000h at 125°C, RI > 1,000 MΩ
Humidity	90-98% (10 cycles)
Salt Spray	150h
Fluid Resistance	MIL-SD-1344, Method 1016
Shock	120 g/2 ms, 130 g/3 ms
Sinusoidal Vibration	10-2,000-10 Hz-20 g
Random Vibration	20-2,000 Hz, 0.2 g ² /Hz
Electrical Discontinuity	< 20 ns

ELECTRICAL

Current Rating	7.5 A
Contact Resistance	< 8 mΩ
Shell Conductivity	< 5 mΩ
Insulation Resistance	> 5,000 Ω (at sea level), 21,000 MΩ (30 mi later)
Testing Voltage	1,500V, 50-60 Hz

MATERIALS & FINISHES

Contact	Copper alloy, gold plated
Housing	Aluminium alloy (RoHS compliant), nickel plated
Insulator	PEI
Floating	Copper alloy, nickel plated
RFI Band	Copper beryllium

TOOLS

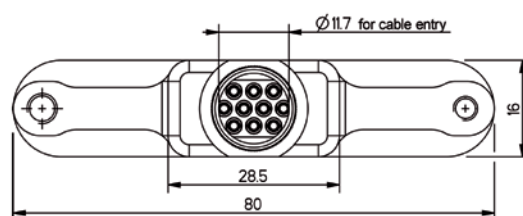
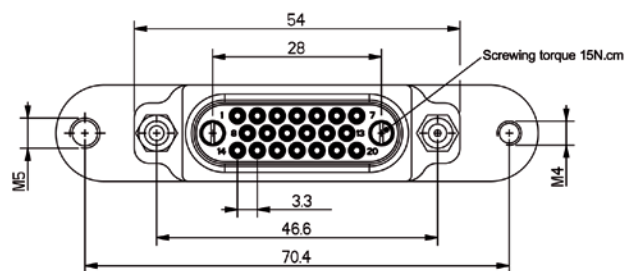
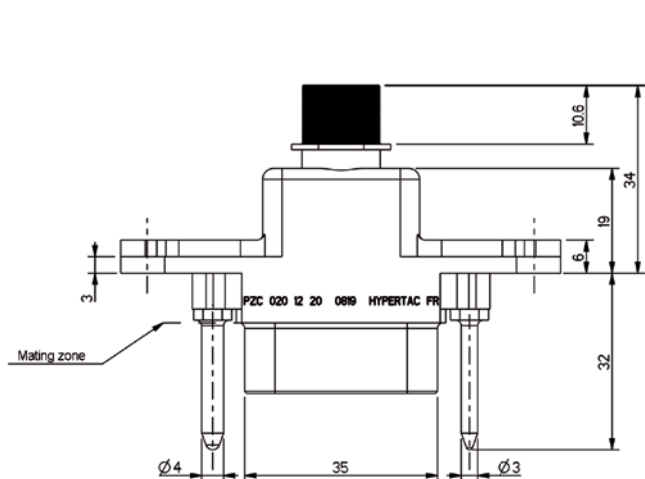
Crimping Tool	M22520/2-01
Positioner	SS-010 0 00 002 (male contact), SS-010 00 00 004 (female contact)
Extractor	SD-010 00 00 00 001

DIMENSIONS

PCZ Series Plugs & Receptacles

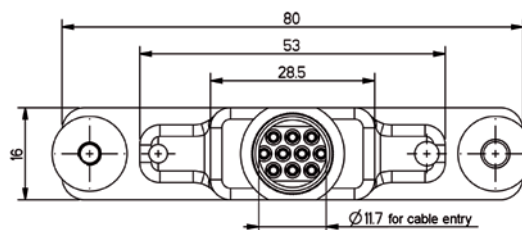
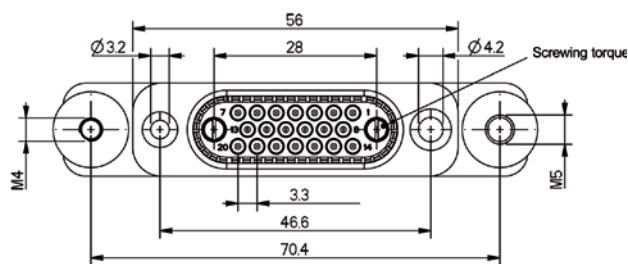
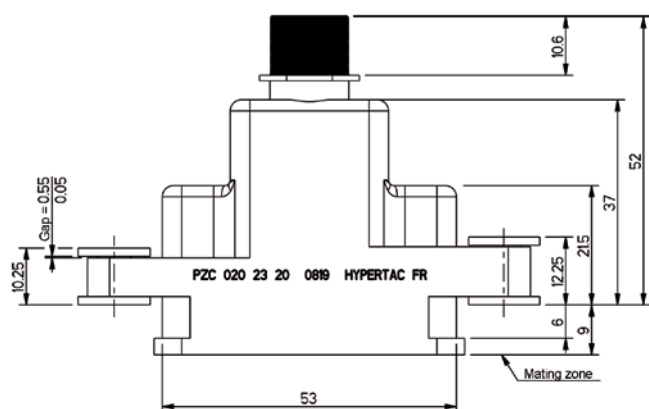
► 20-WAY PLUG

Product P/N: PZC-020-12-20



► 20-WAY RECEPTACLE

Product P/N: PZC-020-23-20



Notes:

1) Dimensions are in mm

2) All data is subject to change w/out notice

