

PRODUCT INFORMATION

TCMB

Switch for DC Application

The battery switch is used to connect and disconnect the DC power from the battery during maintenance of the battery box with a high level of safety.

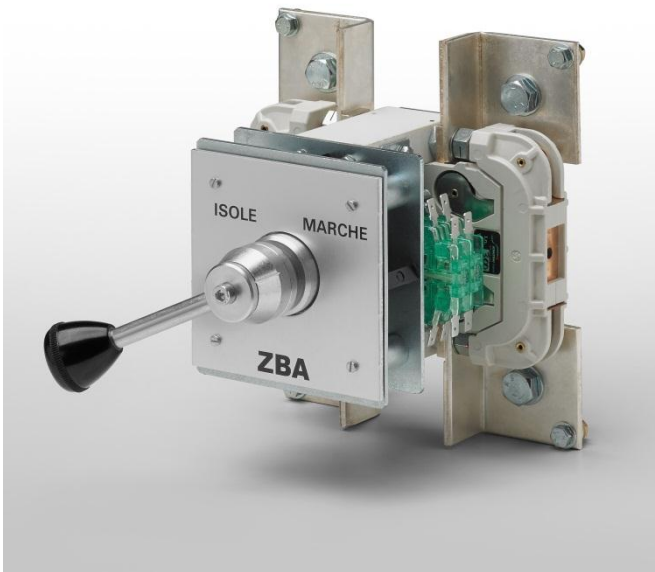
The TCMB line covers a current range up to 800A and controls multiple poles simultaneously.

Features:

- Multiple switching positions
- Auxiliary contacts
- Manual or remote (TCMO) switching control
- Snap action
- Door locker
- Lockable
- Specific marking

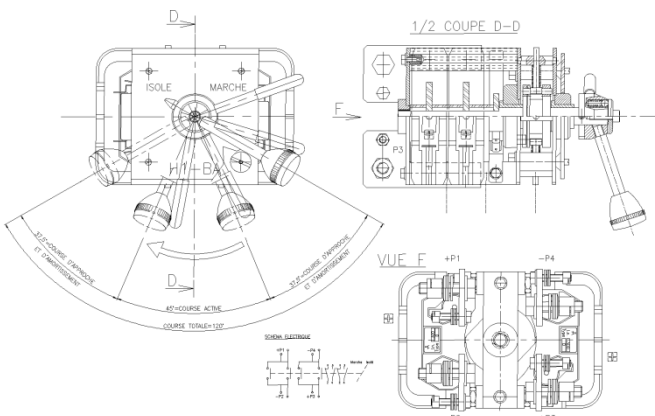
Applications:

- Railway battery cabinet
- DC power disconnecting



Dimensions & Diagrams

Technical Data



Nominal voltage U_n	750 V DC
Rated insulation voltage U_{Nm} (U_i)	1,000 V DC
Conventional thermal current I_{th}	800 A
Short time withstand current I_{cw}	2,500 A
Mechanical endurance	2 million cycles
Degree of protection	IP40 (IP00 inside)
Over voltage Pollution degree	OV3 PD3
Dimensions	On request
Temperature range	-50°C ... +70°C
Standards	EN 50124-1 EN 60077-1; EN 60077-2 EN 45545; NF F 16-101; NF F 16-102