



## Virtual Sample Kit



## KOAXXA RF Interconnects

- H : 15 mOhm
- C : 5000 mOhm
- H : 750 VAC ( )
- 1000 VAC ( )
- K : 1.05 + .007\*f(GHz) 18 GHz
- C : 20G 10 2000 Hz
- 500 100G
- T : -55...+85o
- T /
- A
- P
- M
- Mil/Aero

[www.ptelectronics.ru](http://www.ptelectronics.ru)

### KOAXXA RF Interconnects Kit

#### Straight Cable Plug



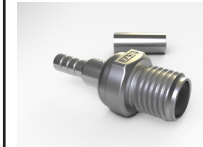
Part Number	Terminates To
SMA-PS-1A-S	RG 402 Semi-Rigid, RG 402 Conformable
SMA-PS-1B-S	RD316, K02252D
SMA-PS-1C-S	RG 405 Semi-Rigid, RG 405 Conformable
SMA-PS-1D-S	RG 178, RG 196
SMA-PS-1F-S	RG 174, RG 188, RG 316
SMA-PS-1G-S	RG 58, RG 141, RG 142

#### Right Angle Cable Plug



Part Number	Terminates To
SMA-PR-1A-S	RG 402 Semi-Rigid, RG 402 Conformable
SMA-PR-1B-S	RD316, K02252D
SMA-PR-1C-S	RG 405 Semi-Rigid, RG 405 Conformable
SMA-PR-1D-S	RG 178, RG 196
SMA-PR-1F-S	RG 174, RG 188, RG 316
SMA-PR-1G-S	RG 58, RG 141, RG 142

#### Straight Cable Jack



Part Number	Terminates To
SMA-JS-1A-S	RG 402 Semi-Rigid, RG 402 Conformable
SMA-JS-1B-S	RD316, K02252D
SMA-JS-1C-S	RG 405 Semi-Rigid, RG 405 Conformable
SMA-JS-1D-S	RG 178, RG 196
SMA-JS-1F-S	RG 174, RG 188, RG 316
SMA-JS-1G-S	RG 58, RG 141, RG 142

#### Bulkhead Cable Jack



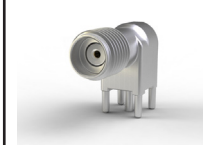
Part Number	Terminates To
SMA-JB-1A-S	RG 402 Semi-Rigid, RG 402 Conformable
SMA-JB-1B-S	RD316, K02252D
SMA-JB-1C-S	RG 405 Semi-Rigid, RG 405 Conformable
SMA-JB-1D-S	RG 178, RG 196
SMA-JB-1F-S	RG 174, RG 188, RG 316
SMA-JB-1G-S	RG 58, RG 141, RG 142

#### Vertical/Straight Board Mount Jack



Part Number	Terminates To
SMA-JS-P2-S	PCB thickness 3.175 mm (.125 in.) max.

#### Right Angle Board Mount Jack



Part Number	Terminates To
SMA-JR-P2-S	PCB thickness 3.175 mm (.125 in.) max.

Application Tooling Information