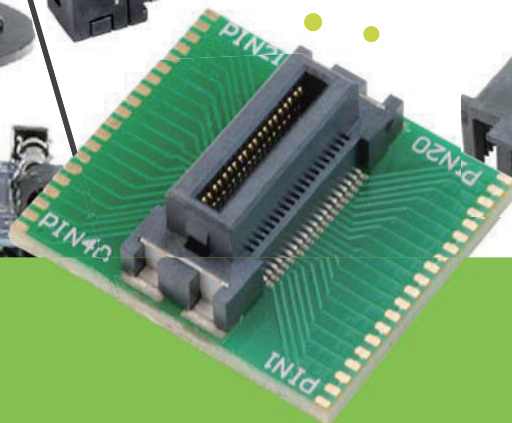
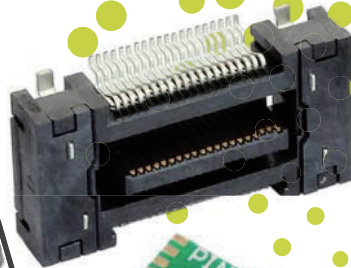


floating connector

3AXIS



Rev. 201810



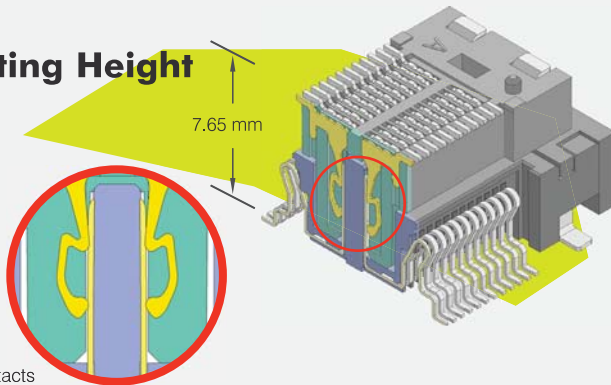
floating connector 3AXIS

Greenconn's Floating Connector Support Various Electronic Devices

Amid the trends that turn electronic devices more compact and powerful. Connectors have also become smaller in size and higher in functionalities. As a result, floating connector has emerged to provide additional features on top of the compact size and robust performance.

Floating connectors can absorb alignment errors when more than one connector is mounted on a substrate or the substrate is fixed using polarization. They are most often used in devices where multiple substrates are densely incorporated. Examples of devices that adopt floating connectors include car door lock switch or medical equipments.

Mating Height



Dual contacts

Greenconn's floating mechanism is characterized by the absorption of alignment errors at the contact point of the receptacles. The dual contacts shift with respect to the movement of the connector, thereby achieving flexible range of motion.

The 0.5 mm pitch series of the floating connector received critical acclaim at launch due to the functional support of multiple pins despite its small size. It permits space savings on the mounting area of the substrates.

Mechanical Performance

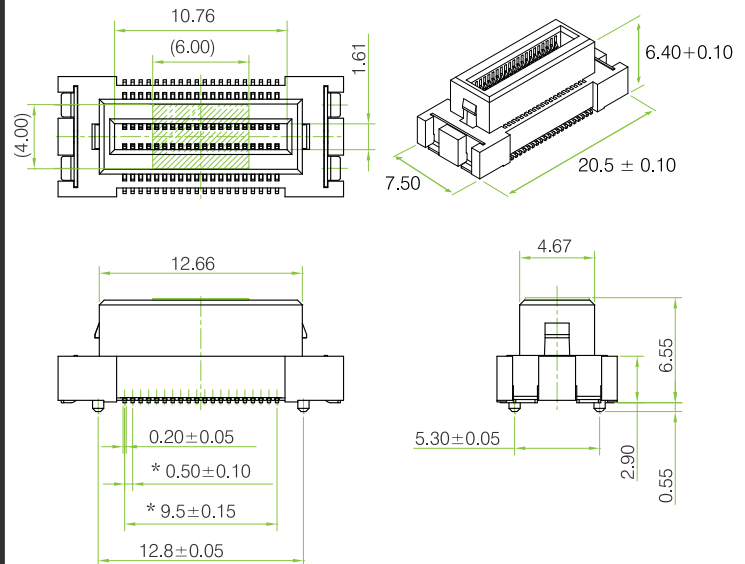
- Voltage Rating: 50V (AC / DC)
- Amperage Rating: 0.4A
- Operating Temperature: -40~+105°C
- Vibration: Frequency: 10~55~10Hz
- Amplitude: 1.5mm
- Sweep time: 1min
- Direction: X, Y, Z

Floating Range

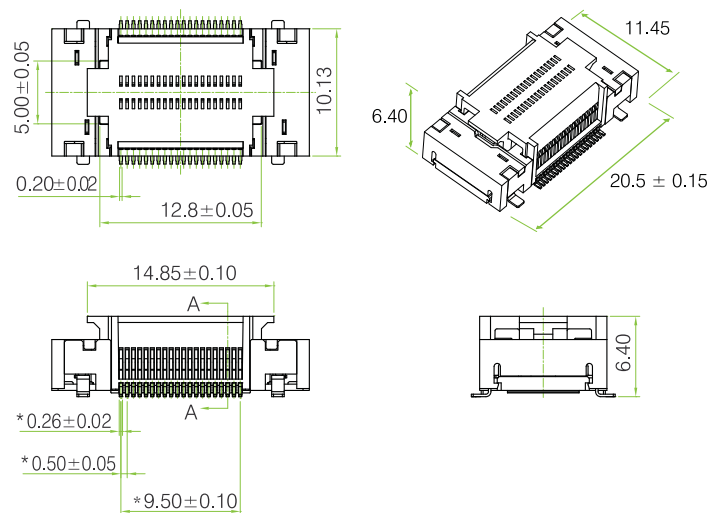
X direction: ± 0.5 mm, Y direction: ± 0.5 mm, Z direction: ± 0.5 mm



GBAC227 series



CBAC227 series



NO. of Pins / Row

2 * 20

2 * 30

2 * 40

2 * 50

2 * 60

2 * 70